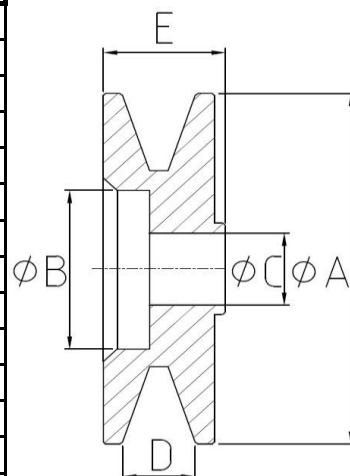


MEDIDAS DE POLEAS EN V

Código	Ø A	Ø B	Ø C	D	E	Canales	Chavetero	Obs.
200010	71,0		17,0	20,0	10,0	1	-	Chapa 2 mitades
200011	87,5		17,0	26,0	10,0	1	-	Chapa 2 mitades
200012	71,0		17,0	20,0	10,0	1	-	Chapa 2 mitades
200014	71,0		17,0	20,0	10,0	1	-	Chapa
200020	74,0	35,0	17,0	21,5	10,0	1	4,0	
200021	74,0	35,0	15,0	21,5	10,0	1	4,0	
200022	82,0	35,0	17,0	23,0	13,0	1	4,0	
200023	104,0	36,0	17,0	23,5	13,0	1	4,0	
200024	80,5	35,0	17,0	26,0	19	1	4,0	
200025	68,0	32,0	17,0	28,0	16,0	1	4,0	
200026	99,5	53,0	17,0	39,5	13,0	2	4,0	
200027	113,0	72,0	17,0	21,0	10,0	1	4,0	
200028	90,5	45,0	17,0	22,0	13,0	1	4,0	
200029	82,5	36,5	17,0	27,0	13,0	1	4,0	
200030	62,0	38,5	17,0	20,0	10,0	1	4,0	
200031	75,0	36,0	15,0	24,5	10,0	1	4,0	
200032	75,0	40,0	17,0	19,0	10,0	1	4,0	
200033	79,5	31,0	17,0	26,5	17,0	1	4,0	
200034	81,0	39,5	17,0	43,0	13,0	2	4,0	
200035	84,0	39,0	17,0	24,5	17,0	1	4,0	
200036	71,0	37,5	17,0	19,0	10,0	1	4,0	
200037	81,5	35,5	17,0	31,0	10,0	2	4,0	
200038	70,0	35,0	17,0	31,5	10,0	2	4,0	
200039	100,0	66,5	17,0	23,0	10,0	1	-	
200040	100,0	52,5	17,0	35,0	10,0	2	4,0	
200041	71,0	37,5	17,0	15,6	10,0	1	4,0	
200051	70,0	35,0	17,0	33,5	10,0	2	-	
200052	91,0	36,0	17,0	38,0	14,0	2	-	
200053	78,0-97,0	36,0	17,0	31,0	10,0	2	-	2 Ø exterior
200054	76,0	35,0	17,0	40,0	13,0	2	-	
200055	117,0	60,0	25,0	36,0	13,0	2	5,0	
200056	128,0	91,0	22,2	49,0	13,0	2	5,0	
200057	115,0	70,0	Cónico	33,0	13,0	2	5,0	
200058	73,0	37,0	17,0	52,0	13,0	1	4,0	
200059	74,0	35,0	17,0	20,5	10,0	1	4,0	
200060	91,5	47,0	22,2	49,0	14,0	2	5,0	
200061	92,0	55,0	25,0	38,5	13,0	2	5,0	
200062	130,0	91,0	30,0	46,5	13,0	2	8,0	
200063	90,0	34,0	17,0	37,0	10,0	1	-	
200064	97,0	65,5	22,2	30,5	10,0	1	-	
200065	107,5	-	15,0	32,0	10,0	1	3,0	Chapa c/ turbina
200066	97,0	55,0	17,0	38,0	13,0	2	-	
200067	80,0	42,0	25,0	34,5	13,0	2	5,0	
200068	68,0	36,0	17,0	35,0	10,0	1	-	
200069	76,0	40,0	17,0	36,0	13,0	2	4,0	
200070	99,0	53,0	17,0	37,5	13,0	2	-	
200071	94,5	34,8	22,2	35,0	13,0	2	4,0	
200072	82,5	34,8	22,2	35,0	13,0	2	4,0	
200073	80,0	40,0	17,0	19,0	13,0	1	-	
200074	90,0	-	22,2	33,5	13,0	1	-	
200075	84,5	39,5	22,2	43,5	13,0	2	4,0	



200076	83,8	39,0	17,0	25,5	17,0	1	-	
--------	------	------	------	------	------	---	---	--



MEDIDAS DE POLEAS EN V

Código	Ø A	Ø B	Ø C	D	E	Canales	Chavetero	Obs.
200077	86,0	47,0	17,0	31,0	10,0	2	-	
200078	92,0	53,0	30,0	36,0	13,0	2	8,0	
200079	74,0	35,0	17,0	16,0	10,0	1	4,0	
200080	92,0	55,0	30,0	38,5	13,0	2	8	
200081	82,4	41,0	17,0	30,8	38,0	2	4	

